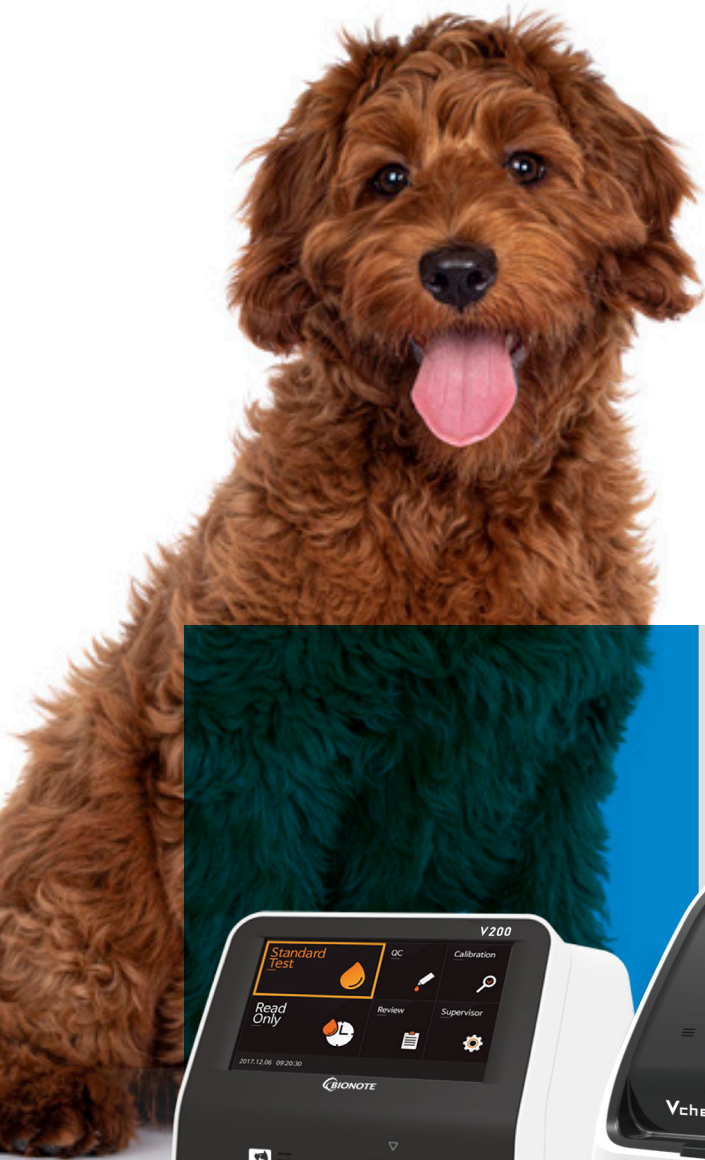


# Vcheck Canine CRP

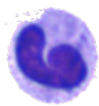
A marker for early screening  
of inflammation in dogs



# What is C-reactive protein (CRP)<sup>1</sup>?

- Major acute-phase proteins (APPs) produced in the liver
- Exists at very low concentrations in healthy dogs
- Increase within 4~6 hours after inflammatory stimulus
- Rising 10 to 100 times and peaking within 24–48 hours
- Decreases within 24 hours after resolution

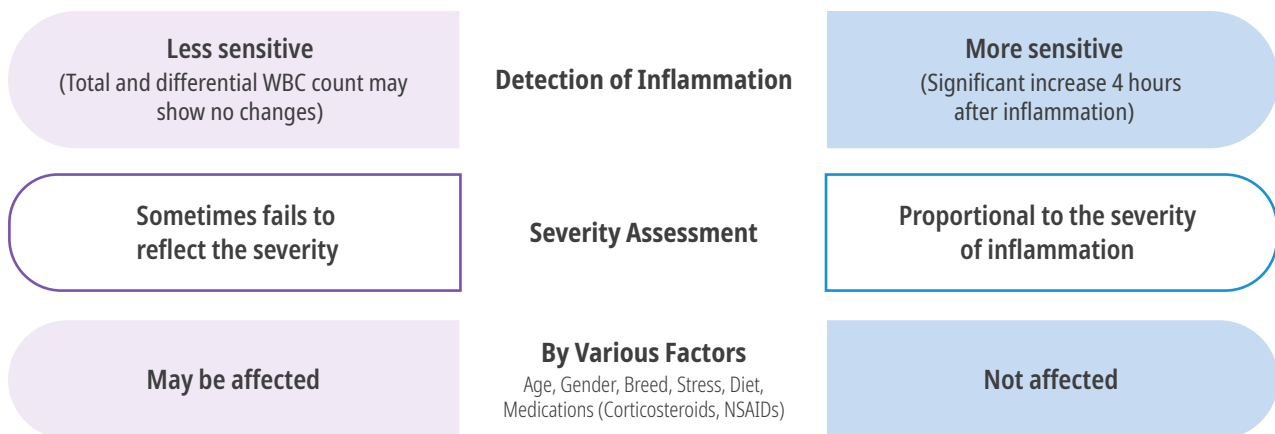
## The advantages of CRP over WBC<sup>2,3,4,5</sup>



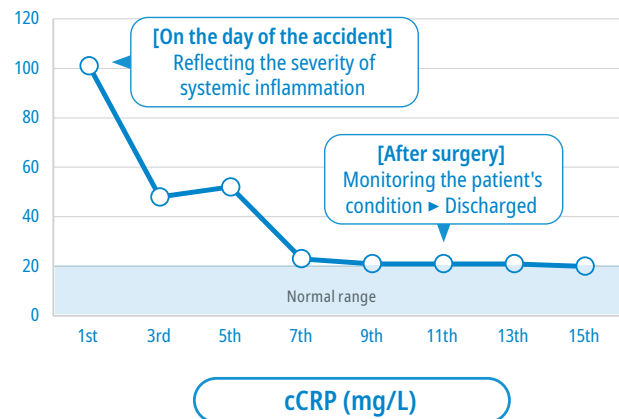
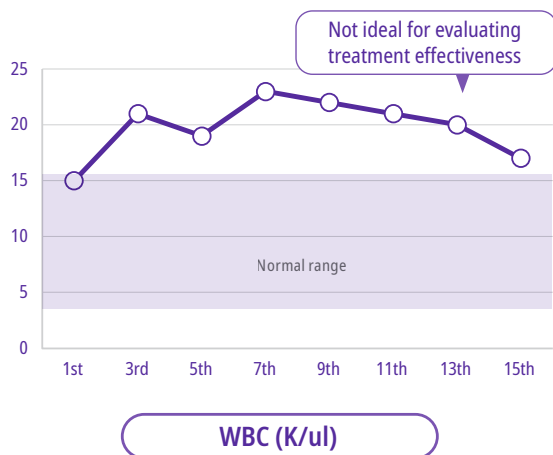
**WBC**



**CRP**



During the recovery period after surgery following a car accident,



**Reference:**

1) C-Reactive Protein as a Diagnostic Marker in Dogs: A Review. *Animals (Basel)*. 2022. Oct 21;12(20):2888. 2) C-reactive protein as a prognostic indicator in dogs with acute abdomen syndrome. *J Vet Diagn Invest*. 2010 May;22(3):395-401. 3) Effects of different glucocorticoid treatments on serum acute phase proteins in dogs. *Vet Rec*. 154:814–817. 4) Serum C-reactive protein and immune responses in dogs inoculated with *Bordetella bronchiseptica* (phase I cells) *Vet Res Commun*. 18:347–357. 5) Effects of carprofen and meloxicam on C-reactive protein, ceruloplasmin, and fibrinogen concentrations in dogs undergoing ovariohysterectomy. *Am J Vet Res*. 74(10):1267–1273. 6) C-reactive protein concentration in dogs with various diseases. *J Vet Med Sci*. 2008 Feb;70(2):127-31.

---

## How can CRP be utilized in dogs?

- **Routine screening for inflammation during health check-ups**  
If CRP levels are elevated, it indicates inflammation somewhere in the body.
- **Assessing the severity of inflammation in sick patients**  
CRP levels quantitatively reflect the severity of inflammation.
- **Monitoring treatment progress in postoperative or inflamed patients**  
Discharge can be considered once CRP levels normalize (< 10 mg/L).

---

## When does CRP concentration increase<sup>1,6</sup>?

### Surgery

Preoperative Assessment, Monitoring Response to Treatment, and Early Detection of Complications

### Infection (bacteria, virus, parasite)

Sepsis, Bacterial enteritis, Parvoviral infection, Babesiosis, Heartworm infection, *Ehrlichia canis* infection, Leishmaniosis, Leptospirosis, etc.

### Autoimmune Diseases

Immune-mediated hemolytic anemia (IMHA), Immune-mediated thrombocytopenia (IMT), Immune-mediated polyarthritis (IMPA)

### Neoplasia

Lymphoma, Hemangiosarcoma, Intestinal adenocarcinoma, Nasal adenocarcinoma, Leukemia, Malignant histiocytosis, etc.

### Other Diseases

Acute pancreatitis, Pyometra, Polyarthritis, Pneumonia, Inflammatory bowel disease (IBD), etc.

\*CRP concentrations may be low in patients with non-inflammatory diseases such as neurological or endocrine diseases.

# Vcheck Canine CRP

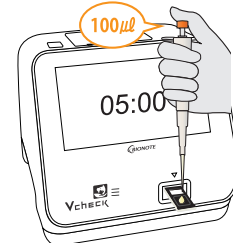
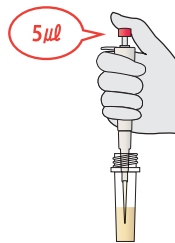
## Specifications

- Species : Dog
- Sample : Serum, Plasma (heparin) 5  $\mu$ l
- Testing time : 5 minutes
- Measurement Range : 10 ~ 200 mg/L
- Storage Condition : 1 ~ 30  $^{\circ}$ C



## Test Procedure

- 1 Draw 5  $\mu$ l of serum or heparinized plasma and add it into an assay diluent bottle
- 2 Close the bottle cap and shake for 5-6 times to mix thoroughly
- 3 Add 100  $\mu$ l of mixture in the sample hole of the test device



< 20 mg/L	20-30 mg/L	> 30 mg/L
Normal	Equivocal Systemic inflammation possible Re-evaluation recommended	Abnormal Consistent with inflammation

## Ordering Information

Product No.	Product Name	Storage Condition	Packing Unit
VCF109DD	Vcheck Canine CRP 2.0	1 - 30 $^{\circ}$ C	10 Tests/Kit

## Evaluation Studies



Impact of serum C-reactive protein level as a biomarker of cancer dissemination in canine lymphoid neoplasia. Vet World. 2022 Dec; 15(12): 2810-2815.



Evaluation of the hematological and serum protein profiles of blood parasite coinfection in naturally infected dogs. Thai J Vet Med. 2021. 51(4): 723-728



C-reactive protein as an efficient indicator monitoring and prognosing canine inflammatory diseases. Taiwan Veterinary Journal, Vol. 47, Nos. 3&4 (2021) 49-60.



Serum protein profiles and C-reactive protein in natural canine filariasis. Vet World. 2021 Apr; 14(4): 860-864.



Characterization of serum protein electrophoresis patterns and C-reactive protein in canine tick-borne diseases. Veterinary World, 14(8): 2150-2154.



Manufactured by

BIONOTE, Inc.

22, Samsung 1-ro 4-gil, Hwaseong-si, Gyeonggi-do, 18449, Republic of Korea  
TEL: 82-31-211-0516 | FAX: 82-31-8003-0618 | [www.bionote.co.kr](http://www.bionote.co.kr)

Rev.0