

E.canis Ab

General Information

Purpose : Detection of *Ehrlichia canis* antibody

Principle : Immunochromatographic assay

Specimen : Whole blood, plasma or serum

Materials provided :

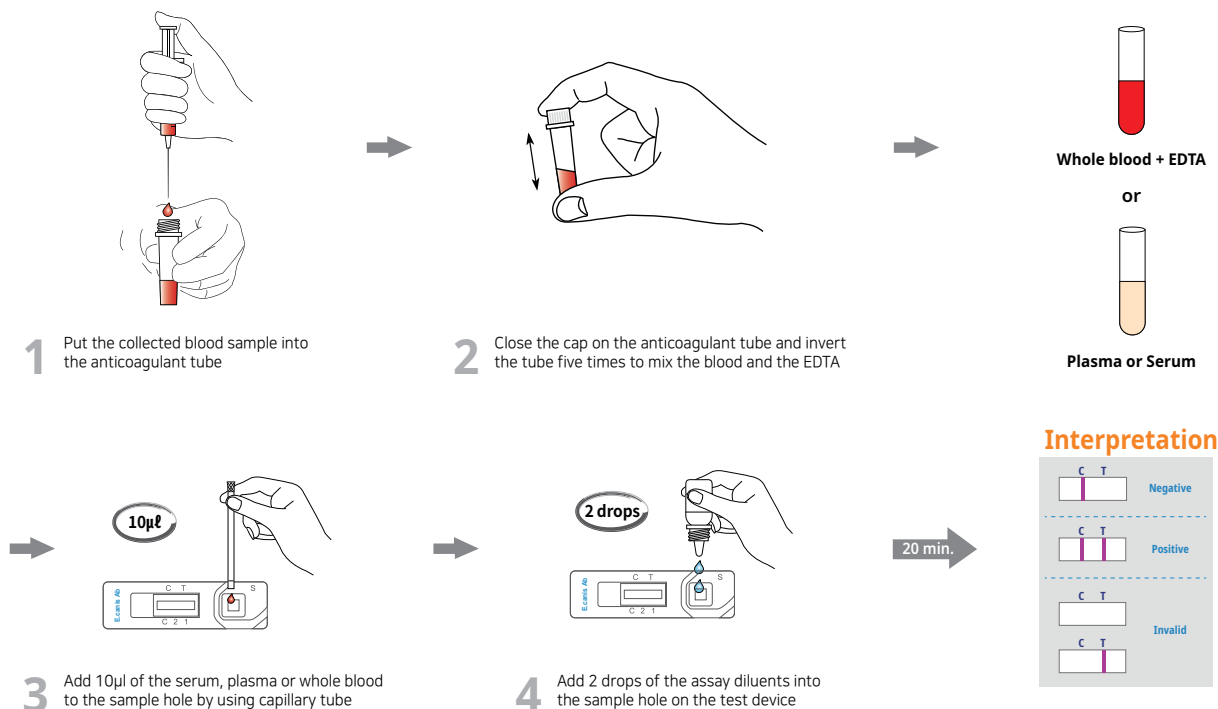
- Anigen Rapid E.canis test device
- Assay diluents bottle
- Anticoagulant tube
- Disposable capillary tube

Special Features :

- One-step testing procedure : Quick & Accurate
- High sensitivity and specificity
 - Sensitivity : 98.2 % vs. IFA
 - Specificity : 100 % vs. IFA



Test Procedure



Ordering Information

Cat. No.	Description	Type	Pack size
RB2105DD	E.canis Ab	Device	10 Tests/Kit