

# Leishmania Ab

## General Information

**Purpose :** Detection of *Leishmania infantum* antibody

**Principle :** Immunochromatographic assay

**Specimen :** Whole blood, plasma or serum

**Materials provided :**

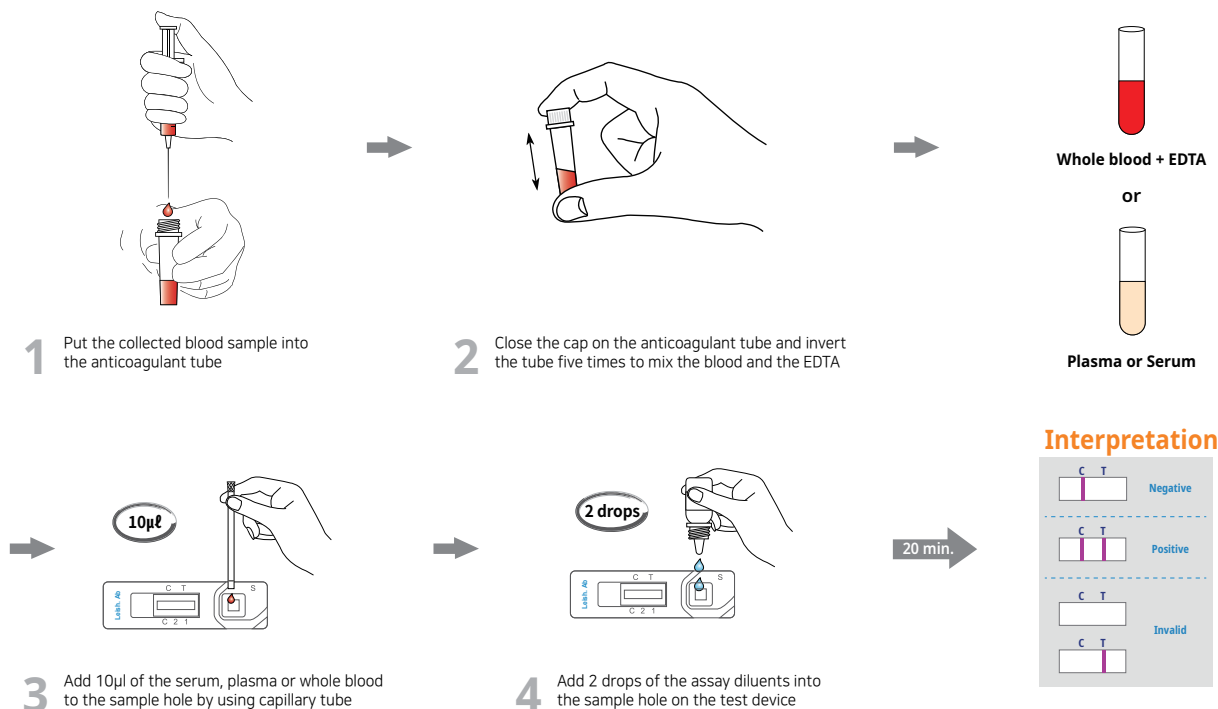
- Anigen Rapid Leishmania test device
- Assay diluents bottle
- Anticoagulant tube
- Disposable capillary tube

**Special Features :**

- One-step testing procedure : Quick & Accurate
- High sensitivity and specificity
  - Sensitivity : 97.2 % vs. IFA
  - Specificity : 99.8 % vs. IFA



## Test Procedure



## Ordering Information

| Cat. No. | Description   | Type   | Pack size    |
|----------|---------------|--------|--------------|
| RB2104DD | Leishmania Ab | Device | 10 Tests/Kit |