

Giardia Ag

General Information

Purpose : Detection of vegetative stages and cysts of Giardia

Principle : Immunochromatographic assay

Specimen : Canine, Feline fecal swab

Materials provided :

- Anigen Rapid Giardia Ag test device
- Assay diluents tube
- Disposable swab
- Disposable dropper

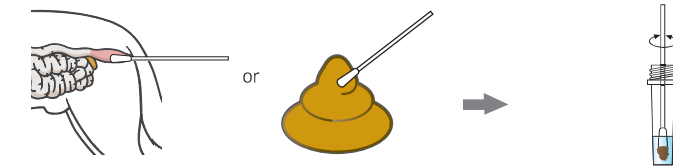
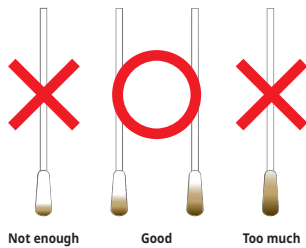
Special Features :

- Able to detect the pathogen in both dogs and cats
- One-step testing procedure : Quick & Accurate
- High sensitivity and specificity compared with Real-time PCR
 - Sensitivity : 100%
 - Specificity : 100%
- Detection limit: 125/100 µl

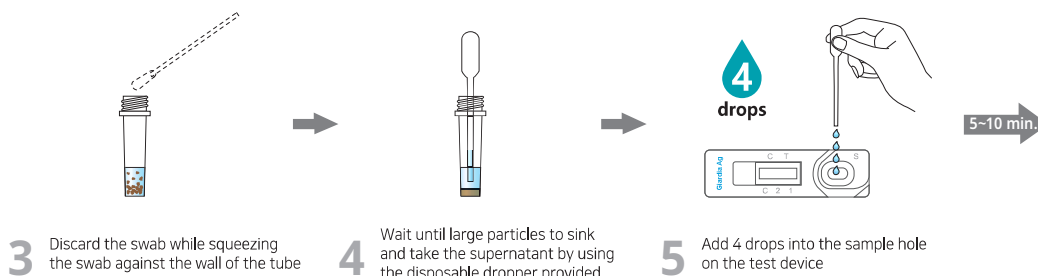


Test Procedure

[Proper sample amount collected by a swab]

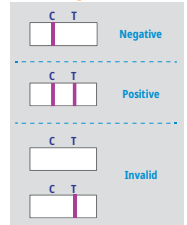


- 1 Collect a sample from the feces by using the swab
- 2 Insert the swab into the sample collection tube and stir the swab at least 10 times



- 3 Discard the swab while squeezing the swab against the wall of the tube
- 4 Wait until large particles to sink and take the supernatant by using the disposable dropper provided
- 5 Add 4 drops into the sample hole on the test device

Interpretation



Ordering Information

Cat. No.	Description	Type	Pack size
RG1804DD	Giardia Ag	Device	10 Tests/Kit