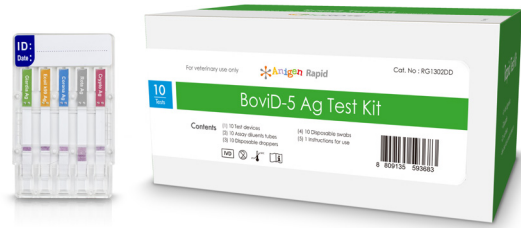


# BovID-4/5, D4 Diarrhea Ag

## Bovine Rota, Corona, E.coli K99, Cryptosporidium, Giardia antigen

Newborn calves are susceptible to neonatal calf diarrhea especially during their first 3-4 weeks of life. Bacteria, viruses and parasites, by attacking the lining of the calf's intestine, give rise to diarrhea. It is one of the major financial damage factors in bovine farms, because once infected this decreases the absorption of essential nutrients from milk and leads to weight loss and dehydration. Generally, calf diarrhea is considered as an emergency situation that requires swift diagnosis and rehydration. One of the key features of a rapid test kit is the "rapidity" of the test result, thus BovID- 5 Ag is an ideal test in these situations.



## Indications

- For differential diagnosis of calf diarrhea
- Calf diarrhea etiologic agent monitoring in field
- For immediate treatment required cases

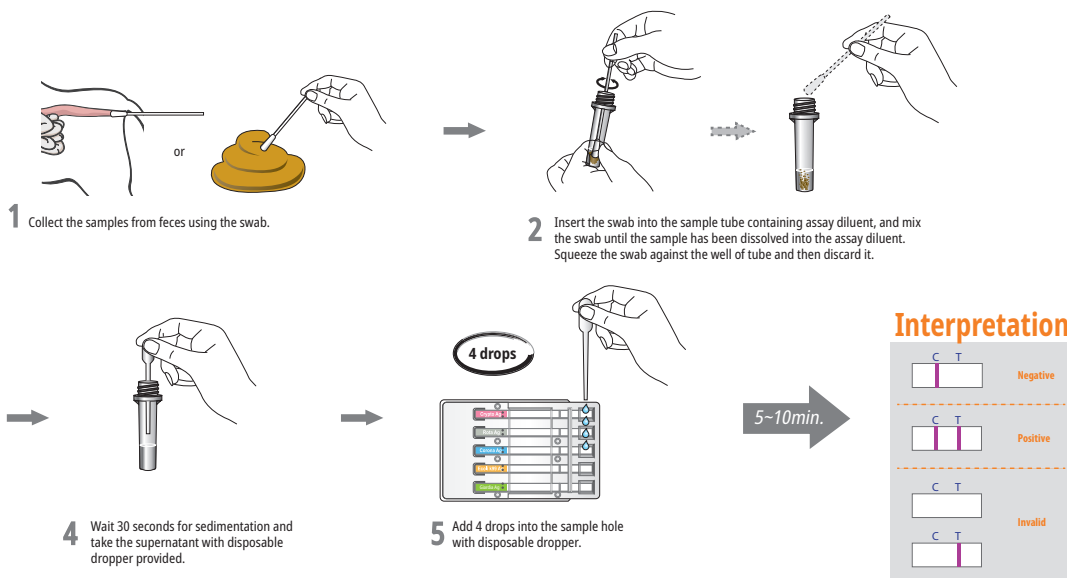
	Sensitivity	Specificity	
<i>Cryptosporidium</i>	98.2%	99.0%	vs.PCR
Rotavirus	99.0%	98.0%	
Coronavirus	98.4%	98.0%	
<i>E.coli K 99</i>	97.8%	99.0%	
<i>Giardia</i>	92.1%	99.1%	vs.ELISA

## Special Features

- Useful tool for ruling out the cause of calf diarrhea
- Specimen : Diarrheal feces
- No cross reaction with other etiologic agents of calf diarrhea
- Sensitivity and Specificity : see table

	BovID-5	BovID-4	D4 Diarrhea
Species	Bovine	Bovine	multi-species
<i>Cryptosporidium</i>	0	0	0
Rotavirus	0	0	0
Coronavirus	0	0	X
<i>E.coli K 99</i>	0	0	0
<i>Giardia</i>	0	X	0

## Test Procedures



## Ordering Information

Cat. No.	Description	Type	Packing size
RC1302DD	Rapid BovID-5 Ag	Device	1 Test x 10/Kit
RC1301DD	Rapid BovID-4 Ag	Device	1 Test x 10/Kit
RG1806DD	Rapid D4 Diarrhea Ag	Device	1 Test x 10/Kit