

B. Brucella Ab

Validated from

*IZS Umbria e Marche, Perugia, Italy

*Agence Française de Sécurité Sanitaire des Aliments, France

Bovine Brucellosis antibody

Bovine brucellosis is commonly caused by *B. abortus* and less frequently by *B. melitensis*, and rarely by *B. suis*. Humans may be infected by contact with animals or animal products contaminated with these bacteria. Available serological tests include the Rose Bengal, ELISA, complement fixation test and tube agglutination test. However, these tests require sample preparation or specialized person and equipment. The Anigen B. Brucella Ab Test Kit provides swift and accurate field test results.



Indications

- Diagnosis of bovine brucellosis in field
- Screening for test and slaughter government policy
- Massive screening for animal import & export

Special Features

- Detection of antibodies against Brucella *abortus*, *melitensis* and *suis*
- Standardized by OIE standard sera (B.abortus 1119-3)
- More reliable result than rose bengal test
- High correlation with ELISA test
- World's first commercialized rapid test kit for detection of B. brucellosis
- Specimen: Blood, Plasma, Serum
- Sensitivity: 100% vs. ELISA
- Specificity: 99.1% vs. ELISA

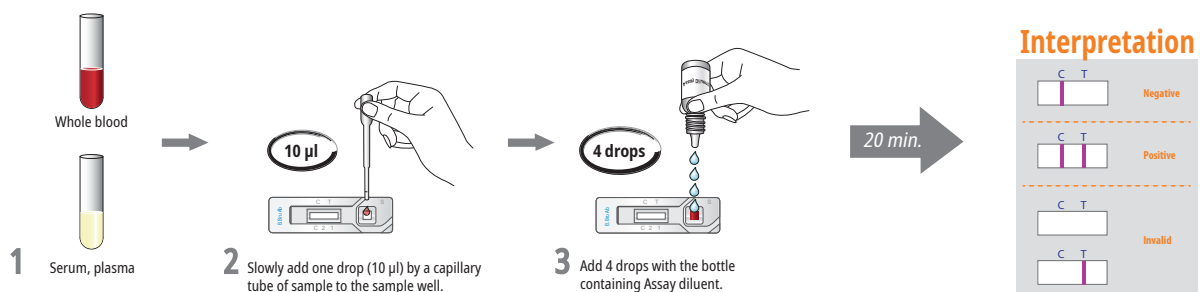
Advantages of Anigen Rapid B.Brucella Ab test

	RBT	MRT	Anigen
Specimen	Serum only	Milk only	Whole blood, Serum, Plasma
Use in field	No	Yes	Yes
Time	One day	1 hour	20 minutes
Cross reaction	Cross reaction with Yersinia enterocolitica		No cross reaction

* RBT : Rose Bengal Test

* MRT : Milk Ring Test

Test Procedures



Ordering Information

Cat. No.	Description	Type	Packing size
RG2301DD	Rapid B.Brucella Ab	Device	1 Test x 10/Kit