

# Anigen Rapid IBDV Ag Test Kit

## Principles

**Anigen Rapid IBDV Ag Test Kit** is a chromatographic immunoassay for the qualitative detection of Infectious Bursal Disease(Gumboro) virus antigen in avian Bursa of Fabricious or cloaca swab.

**Anigen Rapid IBDV Ag Test Kit** has two letters which are test(T) line and control(C) line on the surface of device. Test line and control line in the result window are not visible before applying any samples. The control line is a reference line which indicates the test is performing properly. The control line has to appear every time when the test has performed. If the Infectious Bursal Disease virus antigens are present in sample, a purple test line would appear in the result window.

The highly selective antibodies to Infectious Bursal Disease virus are used as a capture and detector in the assay. These antibodies are capable of detecting Infectious Bursal Disease virus antigen in avian samples with a high accuracy.

## Materials provided

- 1) Ten (10) Anigen Rapid IBDV Ag Test Devices
- 2) Ten (10) Assay diluents tubes
- 3) Ten (10) Disposable swabs
- 4) Ten (10) Disposable droppers
- 5) One (1) Instructions for use

## Materials required, but not provided

- 1) Timer

## Precautions

- 1) The test Kit is for avian use only. Do not use for other animals.
- 2) The test device is sensitive to humidity as well as heat. Perform the test immediately after removing the test device from the foil pouch.
- 3) Do not reuse the test components.
- 4) Apply the assay diluents vertically.
- 5) Do not touch the membrane in the result window of test device.
- 6) Do not use the test kit beyond the stated expiration date marked on the package label.
- 7) Do not use the test kit if the pouch is damaged or the seal is broken.
- 8) Do not mix components from different lot numbers because the components in this kit have been quality control tested as standard batch unit.
- 9) All samples should be handled as being potentially infectious. Wear protective gloves while handling samples. Wash hands thoroughly afterwards.
- 10) Decontaminate and dispose of all samples, used kits and potentially contaminated materials safely in accordance with national and local regulations.

## Storage and Stability

- 1) Store the test kit at 2~30°C. **DO NOT FREEZE.**
- 2) Do not store the test kit in the direct sunlight.
- 3) The test kit is stable within the expiration date that marked on the package label.

## Collection and Preparation of Sample

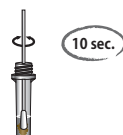
[Refer to the Figure of detailed Sample collection & Test procedures]

- 1) The best recommended specimen is Bursa of Fabricious because this organism has plenty of virus antigen.
- 2) Cloacal swab is also recommended. In this case, however, it may appear false negative because of small virus antigen.
- 3) The specimens should be tested immediately as soon as collecting samples.

## Procedure of the Test

- 1) All reagents and samples must be at room temperature (15~30°C) before running assay.
- 2) Take a swab sample from cloaca or Bursa of Fabricious using the disposable swab(refer to figure of detailed Sample Collection & Test Procedures).

- 3) Insert the swab sample into the assay diluents tube and mix the swab sample for 10 seconds.



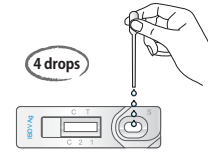
- 4) Wait for 1 minute to settle down the large particles.



- 5) Remove the test device from the foil pouch, and place it on a flat and dry surface.
- 6) Using the disposable dropper, take the supernatant sample in the tube.



- 7) Apply four(4) drops of sample into the sample hole, drop by drop.



- 8) Start the timer. The sample will flow across the result window. If it does not appear after 1 minute, add one more drop of prepared sample to the sample hole.
- 9) For the best result, test 5 chickens in every farm.

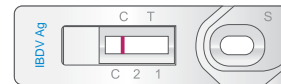
- 10) Interpret test results at 5~10 minutes. Do not decide after 20 minutes.



## Interpretation of the Result

### 1) Negative result

Only control("C") line appears in the result window.



### 2) Positive result

Test("T") line and control("C") line in the result window indicate the presence of Infectious Bursal Disease virus antigen.



### 3) Invalid Result

If the Control line "C" does not appear, the result might be considered invalid. The sample should be retested.



## Limitations of the Test

- 1) Although the Anigen Rapid Infectious Bursal Disease virus Ag Test kit is very accurate in detecting Infectious Bursal Disease virus antigen, a low incidence of false results can occur. Other clinically available tests are required if questionable results are obtained. As with all diagnostic tests, a definitive clinical diagnosis should not be based on the results of a single test, but should only be made by the veterinarian after all clinical and laboratory findings have been evaluated. The detection limit of this kit is about 10<sup>3.0</sup> EID<sub>50</sub>/ml.
- 2) This test kit is not recommended for the testing of pigeon samples as false positive results can occur.
- 3) The reading window may show a light pink background coloration; this will not affect the accuracy of the results.
- 4) BioNote and its distributors cannot be held responsible for the consequences of misuse or misinterpretation of the results given by the test.

# Anigen Rapid IBDV Ag Test Kit

## Figure of Detailed Sample Collection & Test Procedures

### A. Sample Collection Procedures

#### 1. Cloacal feces swab method

- 1) Hold the inside of both wings with one hand.



- 2) Hold the tail part to the upper direction with the other hand.
- 3) Insert the disposable swab to the cloaca of rectum.
- 4) Smear the inside of the cloaca several times with disposable swab.



- 5) Pull out the swab.



- 6) The outside of the swab may be seen a gray mucoid or dark brown color.

#### 2. Swab method of Bursa of Fabricious

- 1) Necropsy the chicken and find the Bursa of Fabricious near the rectum.



- 2) Cut the Bursa of Fabricious in half using with scissors



- 3) Put the sample collection swab into the Bursa of Fabricious.



#### 3. Homogenized Bursa of Fabricious

- 1) Necropsy an infected chicken and find the Bursa of Fabricious.
- 2) Cut the Bursa of Fabricious in piece by using with scissors [Piece size (WxDxH): 5 mm x 5mm x 5mm].
- 3) Homogenize the Bursa of Fabricious with suitable instrument with diluent buffer.
- 4) Stand for 1 minute to pellet the large particle.

### B. Test Procedures

- 1) Insert the swab into the assay diluents tube and mix the swab until the sample has been dissolved into the assay diluent.



- 2) Using the disposable dropper provided, take the supernatant from extracted sample in the tube.



- 3) Apply 4(four) drops into the sample hole using disposable dropper.



- 4) Interpret test results at 5~10 minutes. Do not read after 20 minutes.