

Lyme Ab

General Information

Purpose : Detection of *Borrelia burgdorferi* antibody

Principle : Immunochromatographic assay

Specimen : Whole blood, plasma or serum

Materials provided :

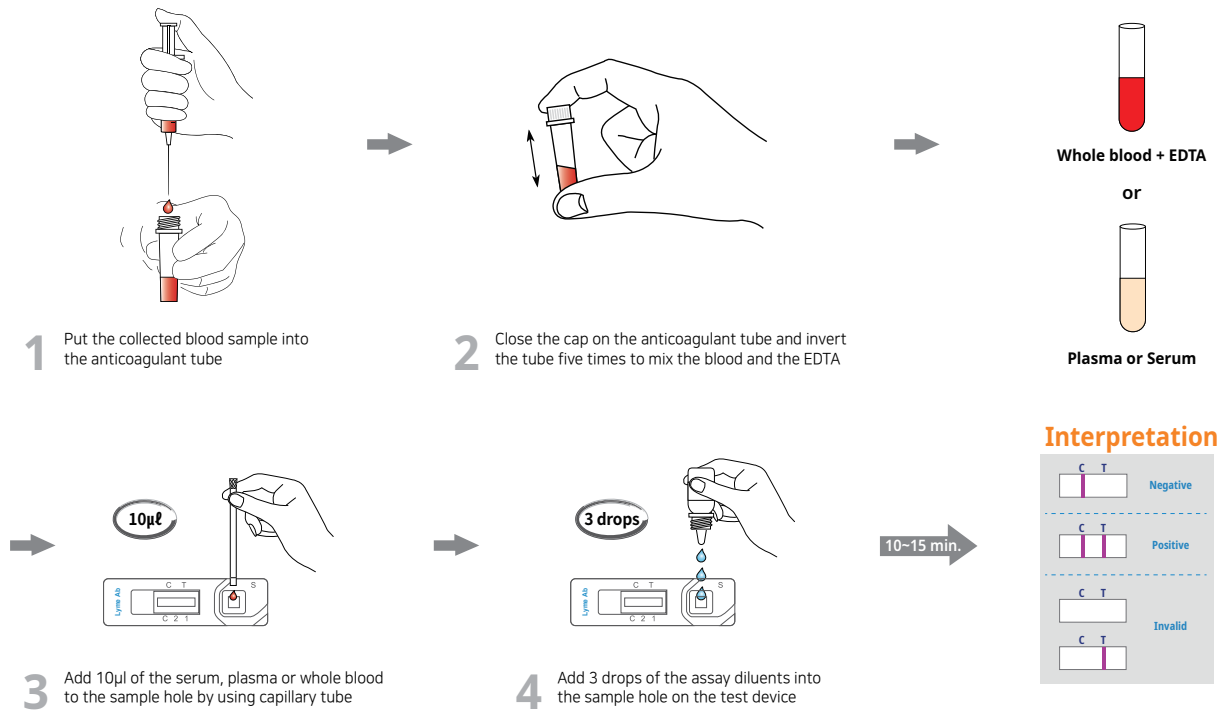
- Anigen Rapid Borrelia test device
- Assay diluents bottle
- Anticoagulant tube
- Disposable capillary tube

Special Features :

- One-step testing procedure : Quick & Accurate
- High sensitivity and specificity
 - Sensitivity : 93%
 - Specificity : 98%



Test Procedure



Ordering Information

Cat. No.	Description	Type	Pack size
RB2122DD	Lyme Ab	Device	10 Tests/Kit