

PED/TEG/Rota Ag

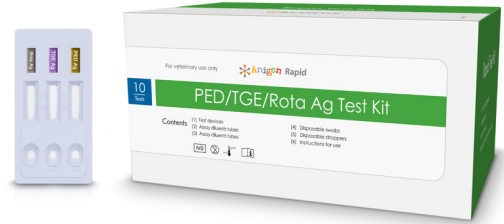
PED/TGE/Rota antigen

Porcine Epidemic Diarrhea Virus (PEDV) is a member of the coronavirus group which causes watery diarrhea, dehydration and high mortality in suckling pigs. The PEDV is transmitted by feces from infected pigs after oral ingestion.

Transmissible Gastro-Enteritis (TGE) is a viral disease of the small intestine that causes vomiting and diarrhea in pigs of all ages. The infection spreads rapidly by aerosol or contact exposure.

Rotavirus is the most common viral causative agent of diarrhea in pigs, cattle and dogs. Group A and B rotavirus are involved with group A being most prevalent and clinically important, containing several serotypes of differing virulence. All ages are susceptible.

ELISA and RT-PCR assays to detect viral antigens in feces or intestinal contents are useful, but require specialized instruments and laboratory personnel. The Anigen Rapid PED/TGE/Rota Ag test kit has been developed to provide fast and reliable test results of PED/TGE/Rotavirus antigen in field conditions.



Indications

- Differential diagnosis of swine diarrheal disease
- PED/TGE/Rotavirus field monitoring
- Tentative diagnosis for swift control in outbreak suspected situation

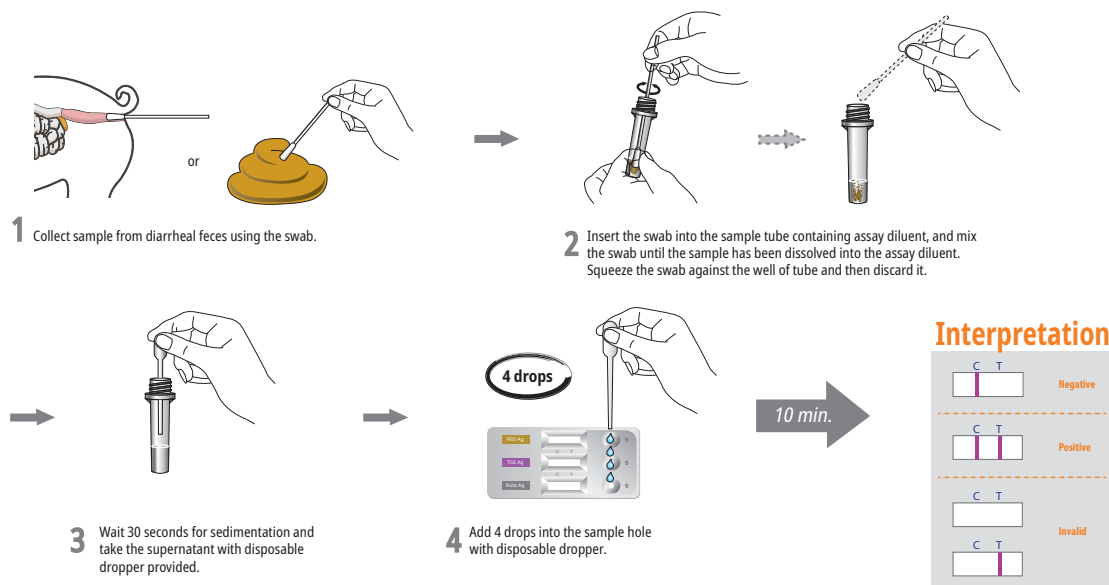
Specifications

- No cross-reaction with other etiologic agents
- World's first & sole PED/TGE/Rotavirus antigen Rapid test kit
- Specimen : Diarrheal feces

Sensitivity and Specificity tests

RT-PCR	Sensitivity	Specificity
Rapid TGE Ag	92.1%	95.2%
Rapid PED Ag	92%	98%
Rapid Rota Ag	92%	99%

Test Procedures



Ordering Information

Cat. No.	Description	Type	Packing size
RC1406DD	Rapid PED/TGE/Rota Ag	Quadruple Device	1 Test x 10/Kit
RG1803DD	Rapid Rota Ag	Device	1 Test x 10/Kit