

Canine Babesia Ab

General Information

Purpose : Detection of Canine Babesia gibsoni antibody

Principle : Immunochromatographic assay

Specimen : Whole blood, plasma or serum

Materials provided :

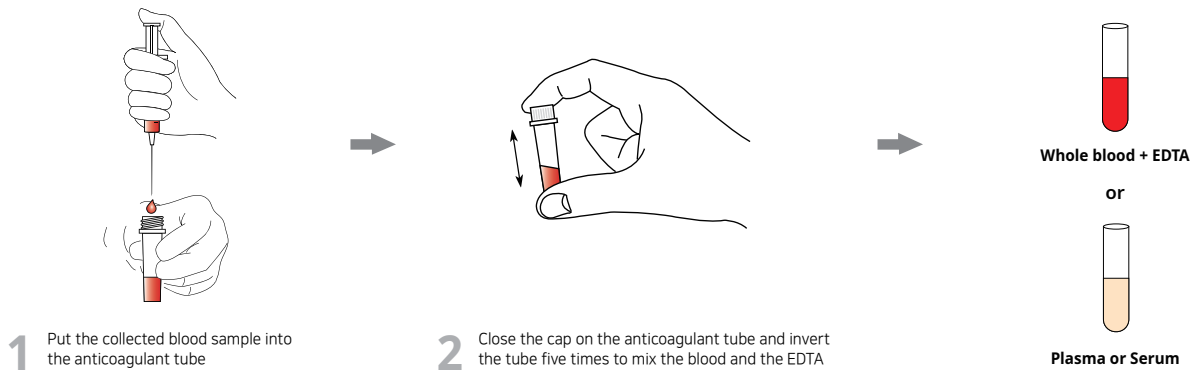
- Anigen Rapid Canine Babesia Ab test device
- Assay diluents bottle
- Anticoagulant tube
- Disposable capillary tube

Special Features :

- One-step testing procedure : Quick & Accurate
- High sensitivity and specificity
 - Sensitivity: 90.9%
 - Specificity: 98.9%



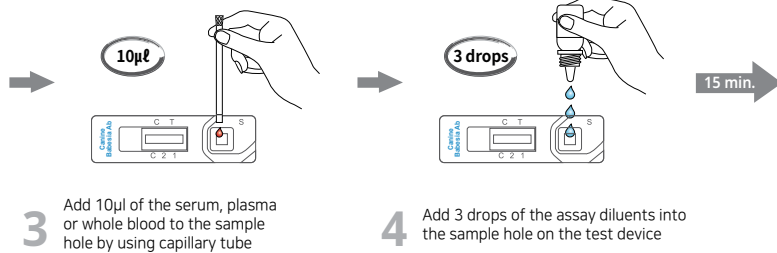
Test Procedure



1 Put the collected blood sample into the anticoagulant tube

2 Close the cap on the anticoagulant tube and invert the tube five times to mix the blood and the EDTA

Whole blood + EDTA
or
Plasma or Serum



3 Add 10µl of the serum, plasma or whole blood to the sample hole by using capillary tube

4 Add 3 drops of the assay diluents into the sample hole on the test device

Interpretation

Clinical Signs	PCR	Bionote Canine Babesia Ab	Interpretation	Diagnosis
+	+	+	4-16 weeks after infection	Infection
+	+	-	2-4 weeks after infection	Infection
+	-	+	At least 17 weeks after infection	Recheck necessary
+	-	-	Only 1-3 weeks passed after infection	Recheck necessary

Ordering Information

Cat. No.	Description	Type	Pack size
RB2126DD	Canine Babesia Ab	Device	10 Tests/Kit