

Anigen Rapid

FHW Ag/Ab

General Information

Purpose : Detection of Feline heartworm antigen and antibody

Principle : Immunochromatographic assay

Specimen : Whole blood, plasma or serum

Materials provided :

- Anigen Rapid FHW Ag/Ab test device
- Assay diluents bottle
- Anticoagulant tube
- Disposable capillary tube

Special Features :

- Simultaneous detection of FHW Ag and Ab with one specimen preparation
- One-step testing procedure : Quick & Accurate
- High sensitivity and specificity

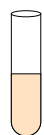


Test Procedure

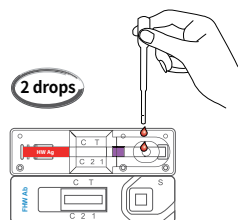


Whole blood + EDTA

or

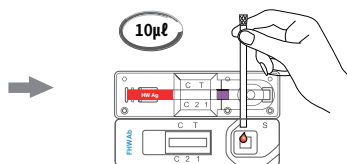


Plasma or Serum

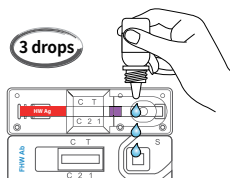


1 Prepare a sample

2 Use the disposable dropper and add 2 drops of the sample into the sample hole (FHW Ag)



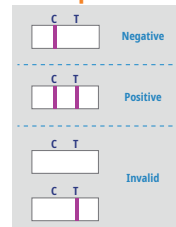
3 Add 10µl of the serum, plasma or whole blood to the sample hole by using capillary tube



4 Add 3 drops of the assay diluents into the sample hole



Interpretation



Ordering Information

Cat. No.	Description	Type	Pack size
RC2205CD	FHW Ag/Ab	Dual Device	10 Tests/Kit