

E.canis/Anaplasma Ab

General Information

Purpose : Detection of *Ehrlichia canis* and *Anaplasma phagocytophilum*/*Anaplasma platys*

Principle : Immunochromatographic assay

Specimen : Whole blood, plasma or serum

Materials provided :

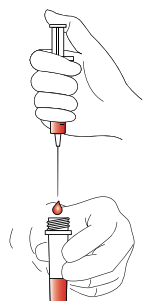
- Anigen Rapid E.canis/Anaplasma Ab test device
- Assay diluents bottle
- Anticoagulant tube
- Disposable capillary tube

Special Features :

- Simultaneous detection of E.canis Ab and Anaplasma Ab with one specimen preparation
- One-step testing procedure : Quick & Accurate
- High sensitivity and specificity



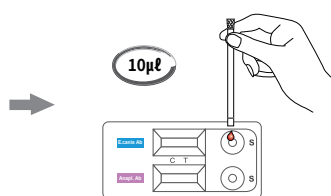
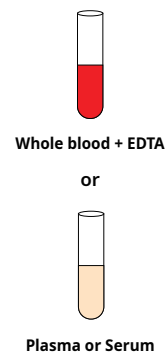
Test Procedure



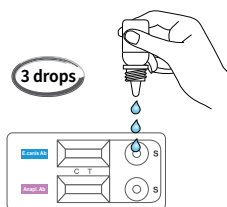
1 Put the collected blood sample into the anticoagulant tube



2 Close the cap on the anticoagulant tube and invert the tube five times to mix the blood and the EDTA



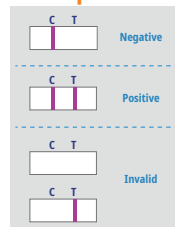
3 Add 10µl of the serum, plasma or whole blood to the sample hole by using capillary tube



4 Add 3 drops of the assay diluents into the sample hole on the test device



Interpretation



Ordering Information

Cat. No.	Description	Type	Pack size
RC2123CD	E.canis/Anaplasma Ab	Dual Device	10 Tests/Kit