

# C.Brucella Ab

## General Information

**Purpose :** Detection of Canine Brucella antibody

**Principle :** Immunochromatographic assay

**Specimen :** Whole blood, plasma or serum

**Materials provided :**

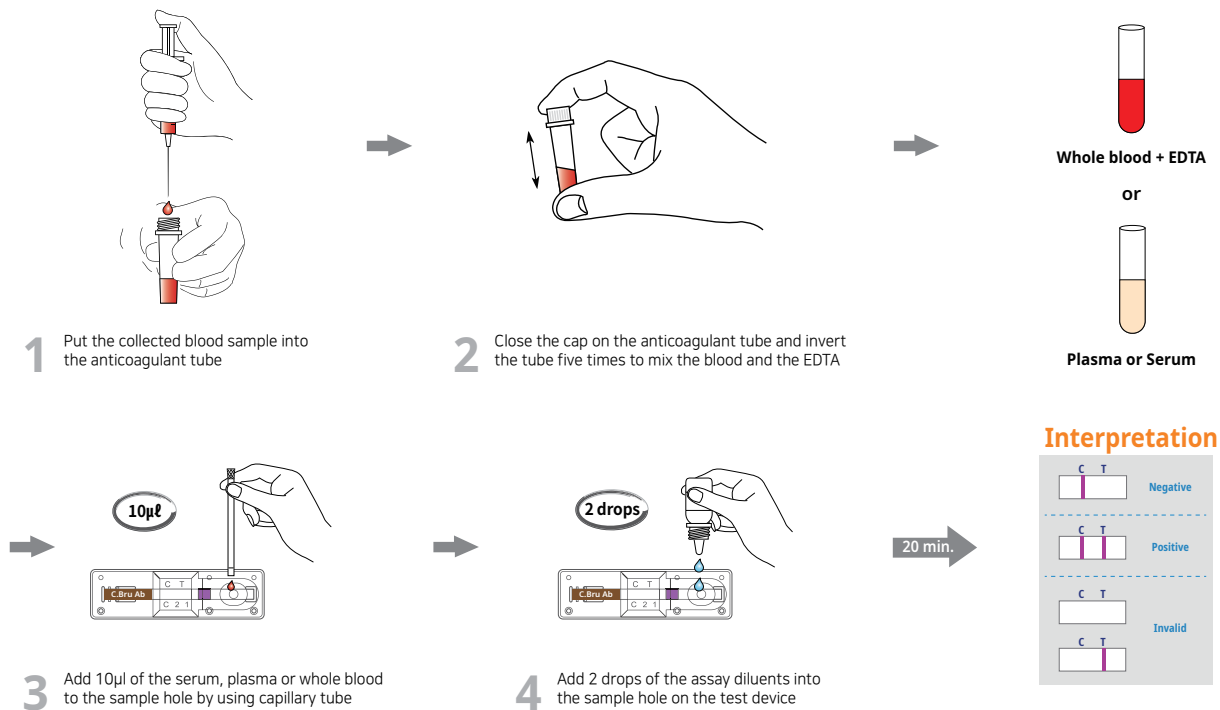
- Anigen Rapid C.Brucella test device
- Assay diluents bottle
- Anticoagulant tube
- Disposable capillary tube

**Special Features :**

- One-step testing procedure : Quick & Accurate
- High sensitivity and specificity
  - Sensitivity : 90 % vs. Virus Isolation method
  - Specificity : 90.1 % vs. Virus Isolation method



## Test Procedure



## Ordering Information

Cat. No.	Description	Type	Pack size
RB2103DD	C.Brucella Ab	Device	10 Tests/Kit