

ONE STEP Canine Influenza Virus Antigen Test

For veterinary diagnostic use only

Anigen Rapid CIV Ag Test Kit

Principles

Anigen Rapid CIV Ag Test Kit is a solid phase immunochromatographic assay for the rapid, qualitative detection of canine influenza virus strain antigen in a canine pharyngeal swab or nasal swab.

Anigen Rapid CIV Ag Test Kit has the letters "T" and "C" as the Test line and Control line on the surface of the device. Both the test line and control line in the result window are not visible before applying any samples. The control line is used for procedural control, and should always appear if the test procedure is performed properly and the test reagents of the control line are working. A purple test line will be visible in the result window if there is enough Canine Influenza virus antigen in the specimen.

The specially selected Canine Influenza virus antibodies are used in the test band as both capture and detector materials. These enable the Anigen Rapid CIV Ag Test Kit to identify Canine Influenza virus antigen in canine specimen with a high degree of accuracy.

Materials provided (10 Tests/Kit)

Materials	10 Tests/Kit
Anigen Rapid CIV Ag Test device	10
Assay diluent tube	10
Disposable swab	10
Disposable dropper	10
Instructions for use	1

Materials required, but not provided

- 1) Timer

Precautions

- 1) The test Kit is for canine use only. Do not apply to other animals.
- 2) The test device is sensitive to humidity as well as heat. Perform the test immediately after removing the test device from the foil pouch.
- 3) Do not reuse test components.
- 4) Apply the sample using disposable dropper vertically.
- 5) Do not touch the membrane in the result window of test device.
- 6) Do not use the test kit beyond the stated expiration date marked on the package label.
- 7) Do not use the test kit if the pouch is damaged or the seal is broken.
- 8) Do not mix components from different lot numbers because the components in this kit have been quality control tested as standard batch unit.
- 9) All sample should be handled as being potentially infectious. Wear protective gloves while handling samples. Wash hands thoroughly afterwards.
- 10) Decontaminate and dispose of all samples, reaction kits and potentially contaminated materials safely in accordance with national and local regulations.

Storage and Stability

- 1) Store the test kit at 2~30°C. **DO NOT FREEZE.**
- 2) Do not store the test kit in the direct sunlight.
- 3) The test kit is stable within the expiration date that marked on the package label.

Collection and Preparation of Sample

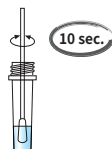
- 1) The test for CIV antigen should be performed the canine pharyngeal swab or nasal swab.
- 2) After collecting the specimen using swab, the specimen should be immediately extracted and tested.
- 3) If specimens are not immediately tested, they should be refrigerated at 2~8°C. For storage not less than 48 hours, freeze the specimen at -20°C or below.

Procedure of the Test

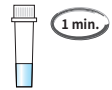
- 1) Collect the pharyngeal or nasal swab with the disposable swab.



- 2) Insert the swab into the assay diluent tube and mix the swab until the sample is dissolved into the assay diluent.



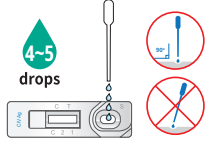
- 3) Leave the tube until the large particles is settled down to the bottom of the tube. (Approximately 1 minute)



- 4) Remove the test device from the foil pouch, and place it on a flat and dry surface.



- 5) Using a disposable dropper provided, take an aliquot from the extracted and mixed sample in the tube.



- 6) Add 4~5 drops into the each sample hole with the disposable dropper.

- 7) Start the timer. The sample will flow across the result window. If it does not appear after 1 minute, add one more drop of prepared sample to the sample hole.

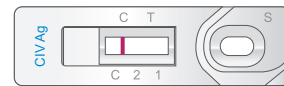


- 8) Interpret test results at **5~10 minutes**. Do not read the result after 20 minutes.

Interpretation of the Result

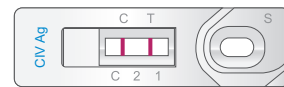
1) Negative result

Only control("C") line appears in the result window.



2) Positive result

Test ("T") line and control ("C") line within the result window indicate the presence of CIV antigen.



3) Invalid Result

If the control ("C") line does not appear, the result might be considered invalid. The sample should be retested.



Limitations of the Test

- 1) Although the Anigen Rapid CIV Ag Test kit is very accurate in detecting Canine Influenza virus antigen, a low incidence of false results can occur. Other clinical and/or laboratory tests might be required if questionable results are obtained. As other diagnostic tests, a definitive clinical diagnosis should not be based on the result of a single test, but should be diagnosed by the veterinarian after all clinical and laboratory findings have been evaluated.
- 2) The reading window may show a light pink background coloration; this will not affect the accuracy of the results.
- 3) BioNote and its distributors cannot be held responsible for the consequences of misuse or misinterpretation of the results given by the test.

Doc. No.: I1107-5E
Revised date: Jun. 08, 2021